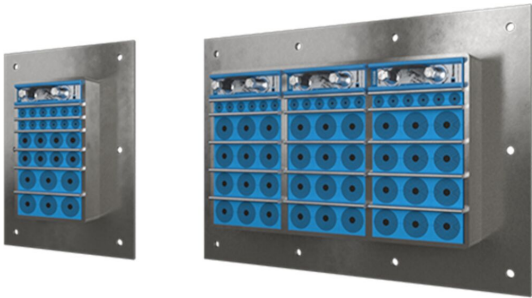




Roxtec GH transit

Transit with flange, for casting or bolting.

The Roxtec GH is a cable and pipe seal for casting in concrete or bolting onto even structures. The rectangular steel frame allows for high cable and pipe packing density. The transit can be used with a GE extension frame to cover the depth of a thick wall.



- Rodent resistant
- Easy to maintain and inspect
- Provides built-in spare capacity

Product characteristics



Fire rated



IP/UL NEMA

Structure of installation



Metal



Gypsum



Concrete

Mounting type



Bolting



Casting

Ratings & certificates

Fire

- E/EI rating according to EN 13501
- E/EI rating according to EN 45545 E60
- F/T rating according to UL 1479

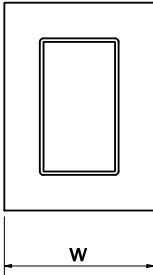
Tightness

- IP 66/67

Frame dimensions

in/lbs

The frame variants below are a limited selection. For the full range of frames and configurations, please visit [roxtec.com](https://www.roxtec.com).

	Product	Frame openings	Packing space	External dimensions WxHxD	Aperture dimensions w x h	Weight	Art. no
	GH 6x1 GALV	1	4.724 x 7.087	9.941 x 13.78 x 2.362	5.827(+0.197/-0.197) x 9.646(+0.197/-0.197)	9.7	5GH0000007882
	GH 6x2 GALV	2	4.724 x 7.087	15.079 x 13.78 x 2.362	10.945(+0.197/-0.197) x 9.646(+0.197/-0.197)	16.5	5GH0000007828
	GH 6x3 GALV	3	4.724 x 7.087	20.217 x 13.78 x 2.362	16.102(+0.197/-0.197) x 9.646(+0.197/-0.197)	22.9	5GH0000008108
	GH 6x1 AISI316	1	4.724 x 7.087	9.941 x 13.78 x 2.362	5.827(+0.197/-0.197) x 9.646(+0.197/-0.197)	10.8	5GH0000008261
	GH 6x2 AISI316	2	4.724 x 7.087	15.079 x 13.78 x 2.362	10.945(+0.197/-0.197) x 9.646(+0.197/-0.197)	16.1	5GH0000008179
	GH 6x3 AISI316	3	4.724 x 7.087	20.217 x 13.78 x 2.362	16.102(+0.197/-0.197) x 9.646(+0.197/-0.197)	22.4	5GH0000009292



Sealing components

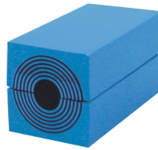
Sealing components



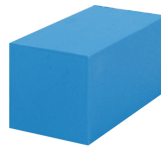
Lubricant



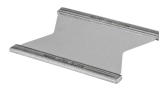
Wedge & Wedgekit



RM module with
Multidiameter™



RM solid compensation
module



Stayplate



GE extension frame



Holder tools



Sealing kit

Accessories

For detailed information, please visit [roxtec.com](https://www.roxtec.com).

The product information provided by Roxtec does not release the purchaser of the Roxtec system, or part thereof, from the obligation to independently determine the suitability of the products for the intended process, installation and/or use.

Roxtec gives no guarantee for the Roxtec system or any part thereof and assumes no liability for any loss or damage whatsoever, whether direct, indirect, consequential, loss of profit or otherwise, occurred or caused by the Roxtec systems or installations containing components not manufactured by an authorized manufacturer and/or occurred or caused by the use of the Roxtec system in a manner or for an application other than for which the Roxtec system was designed or intended.

Roxtec expressly excludes any implied warranties of merchantability and fitness for a particular purpose and all other express or implied representations and warranties provided by statute or common law. User determines suitability of the Roxtec system for intended use and assumes all risk and liability in connection therewith. In no event shall Roxtec be liable for indirect, consequential, punitive, special, exemplary or incidental damages or losses.

The Roxtec products are offered and sold in accordance with the conditions of the Roxtec General Terms of Sales. The latest version of the Roxtec General Terms of Sales can be downloaded from <https://www.roxtec.com/en/about-us/about-roxtec/general-terms-of-sales/>

We reserve the right to make changes to the product and technical information without further notice. Any errors in print or entry are no claims for indemnity. The content of this publication is the property of Roxtec International AB and is protected by copyright.

This document was generated on: 2024-05-03